

## Petworth Cottage Museum

It's not really a museum. It's a house that has been restored, redecorated, furnished and equipped as if it were 1910, when it was the home of Mrs. Mary Cummings.

Mary was the tenant of 346 High Street from 1901 to 1930, and the reconstruction takes account of the living memories of Mary's time here, her Irish Catholic background and her work as a seamstress at home and at Petworth House.

We have always aimed to make the place feel as if Mrs. Cummings has just stepped out. The range is lit, the table is laid for tea, the kettle is boiling.

Tens of thousands of visitors have come since we first opened in 1996. Most have found it very nostalgic or very educational (depending on age!). We hope you will too.

The museum is staffed by friendly volunteer stewards. Friends of the museum receive a free guide book and free pass in return for an annual donation.

If you would like to become a steward or Friend please use any of our contact details to get in touch. The Friends application form can also be downloaded from our website.

## Opening Times

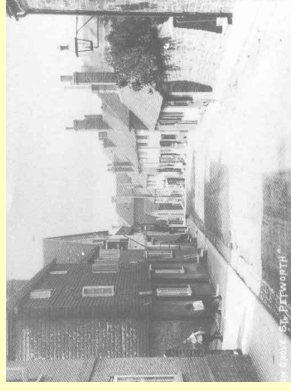
Tuesday to Saturday  
from 2 to 4.30 p.m.  
from 1<sup>st</sup> April to 31<sup>st</sup> October

We also open at other times by arrangement for group and school visits.

To book a group visit call 01798 343496 or email:-  
postmaster@petworthcottageuseum.co.uk

## Admission

Adults £5, Children (under 14) £1



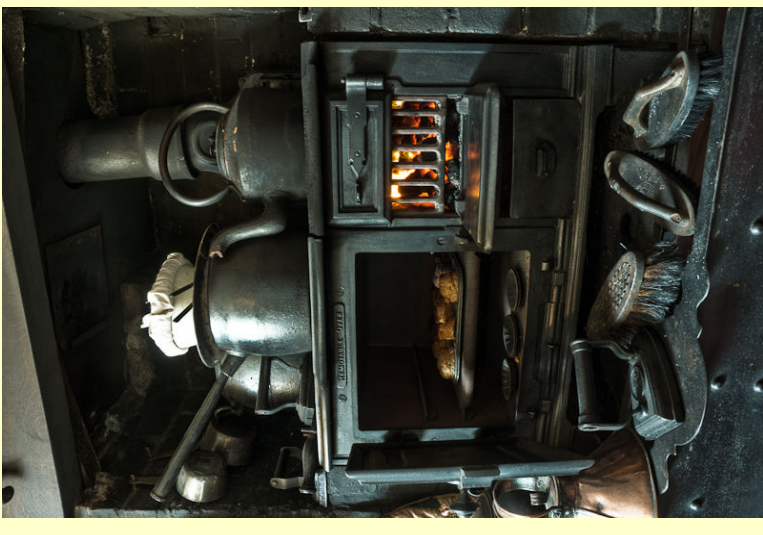
High Street in 1910

The Petworth Cottage Trust, 346 High Street,  
Petworth, West Sussex, GU28 0AU  
[www.petworthcottageuseum.co.uk](http://www.petworthcottageuseum.co.uk)  
Registered in England as a company limited by  
guarantee: company number 3016747.

Registered charity no. 1044840

*"At 346 it will be 1910 precisely"*  
Petworth Cottage Museum

## Mrs. Cummings's Cottage



346 High Street  
Petworth  
West Sussex  
GU28 0AU

Tel. 01798 342100

[www.petworthcottageuseum.co.uk](http://www.petworthcottageuseum.co.uk)

One of "England's Thousand Best Houses"  
in the book by Simon Jenkins

346 High Street is an example of what the great Petworth landlord, Lord Leconfield, provided for his workers in 1910. In the garden care is taken to choose plants appropriate to that time.



Access to the cottage is from the rear garden into the scullery with its stone sink and copper. Stone steps lead to the cellar.



The sitting room has a coal fired range for cooking and heating. The kettle is on the hob and the table is laid for tea. Family photos and mementos adorn the walls.

Upstairs in the bedroom is an iron bedstead, a washstand and a rag rug. Mrs. Cummings's skills are reflected in the hand made bedspread, the Sunday bonnet and a large sampler.



From the corner of the bedroom, a steep stair leads to the attic bedroom.



In the sewing room is Mrs. Cummings's treadle sewing machine, and needlework is in progress.

## How to Find Us

